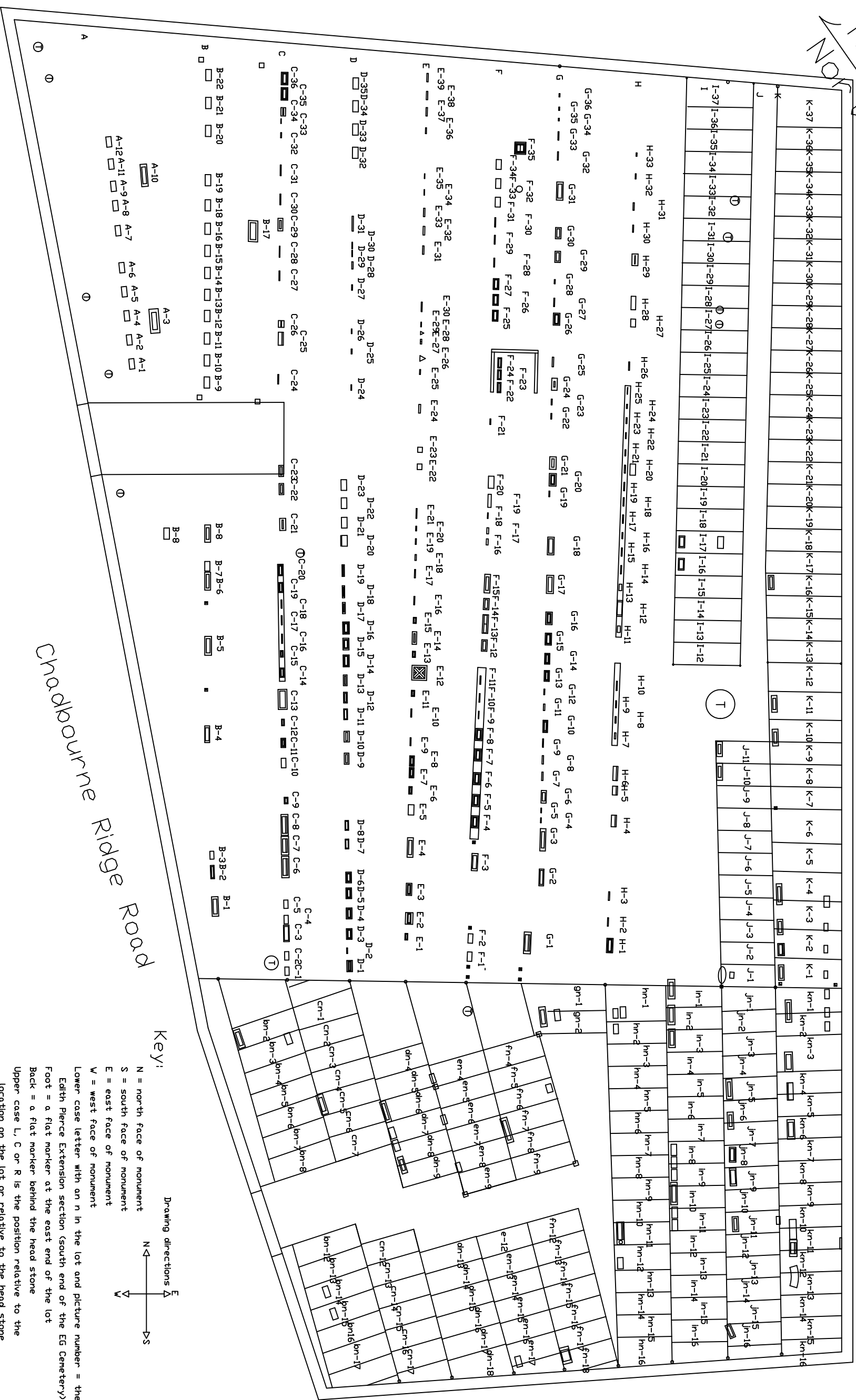


True North



Key:

N = north face of monument
 S = south face of monument
 E = east face of monument
 W = west face of monument

Lower case letter with an n in the lot and picture number = the Edith Pierce Extension section (south end of the EG Cemetery)
 Foot = a flat marker at the east end of the lot
 Back = a flat marker behind the head stone
 Upper case L, C or R is the position relative to the location on the lot or relative to the head stone

Drawing directions

N ←
 E →
 W ←
 S →

VERSION	01
RELEASE DATE:	11/10/2018
DATE:	11/10/2018
SCALE:	1" = 5.61'
DRAWN:	WFB
REVIEWED:	Jong
SHEET:	1 OF 1

ELDER GREY CEMETERY
 Chadbourne Ridge Road
 North Waterboro, York, Maine, 04061

REVISIONS:	BY:
01 1st Plotted Rel.	WFB
02 2nd Plotted Rel.	WFB
03 Not Plotted	WFB
04 3rd Plotted Rel.	WFB
01 Release	WFB